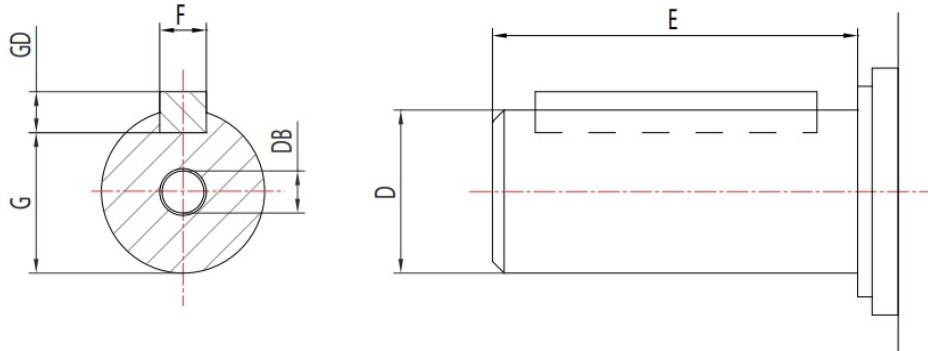


What are the normal shaft tolerances?

Last updated 1 year ago

Below is a basic table showing standard shaft dimensions and tolerances.



Motor Frame Size	D	E	F	G	GD	DB
	(mm)	(mm)	(mm)	(mm)	(mm)	(mm)
56	9j6	20	3	7	3	M3
63	11j6	23	4	8.5	4	M4
71	14j6	30	5	11	5	M5
80	19j6	40	6	15.5	6	M6
90	24j6	50	8	20	7	M8
100	28j6	60	8	24	7	M10
112	28j6	60	8	24	7	M10
132	38k6	80	10	33	8	M12
160	42k6	110	12	37	8	M16
180	48k6	110	14	42.5	9	M16
200	55m6	110	16	49	10	M20
225S4-10	60m8	140	18	53	11	M20
225M2	55m6	110	16	49	10	M20

Motor Frame Size	D	E	F	G	GD	DB
225M4-10	60m6	140	18	53	11	M20
250M2	60m6	140	18	53	11	M20
250M4-10	65m6	140	18	58	11	M20
280S2	65m6	140	18	58	11	M20
280S4-10	75m6	140	20	67.5	12	M20
280M2	65m6	140	18	58	11	M20
280M4-10	75m6	140	20	67.5	12	M20
315S2	65m6	140	18	58	11	M20
315S4-10	80m6	170	22	71	14	M20
315M2	65m6	140	18	58	11	M20
315M4-10	80m6	170	22	71	14	M20
315L2	65m6	140	18	58	11	M20
315L4-10	80m6	170	22	71	14	M20
355M2	75m6	140	20	67.5	12	M20
355M4-10	100m6	210	28	90	16	M24
355L2	75m6	140	20	67.5	12	M20
355L4-10	100m6	210	28	90	16	M24

We make all efforts to better our products. Versions, technical data and figures could be changed therefore. They are not binding before written confirmation.