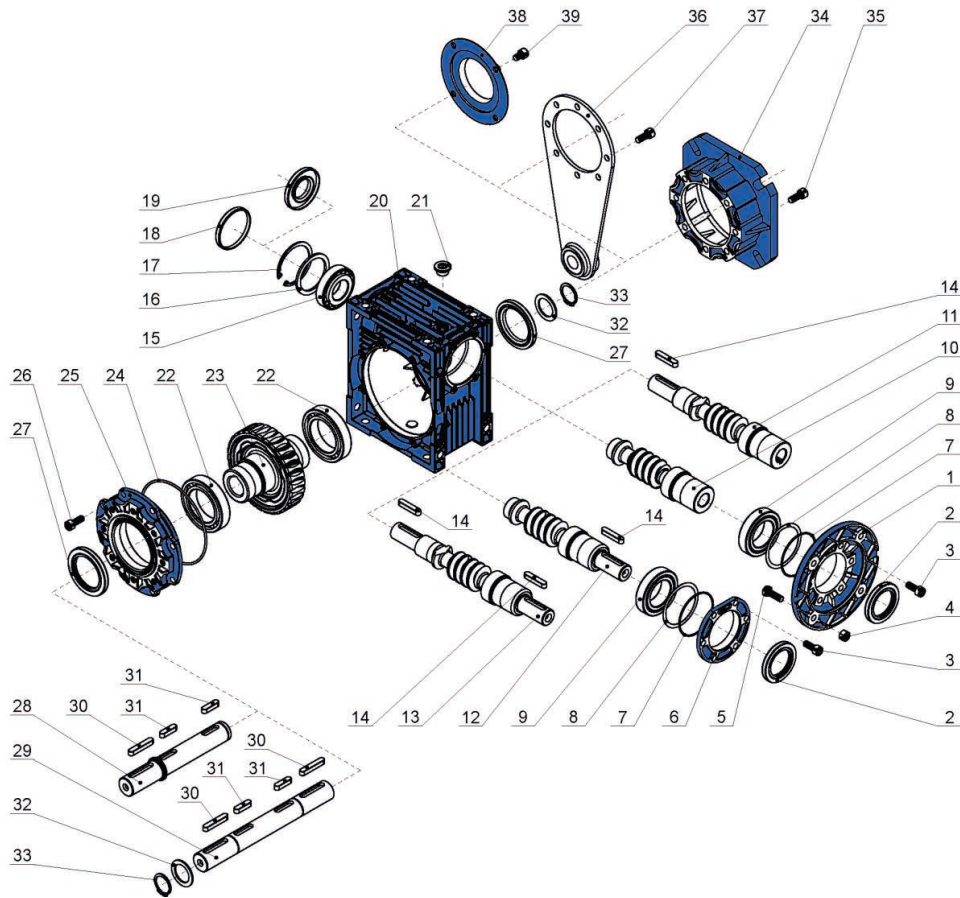


AMRV: Worm Reduction Gearbox Exploded View

AMTECS



- | | | | |
|---------------------------------|-------------------------|----------------------------------|----------------------------------|
| 1 Flange PAM | 11 Double ext. PAM worm | 21 Plug cock | 31 Parallel key |
| 2 Oli seal | 12 RV worm | 22 Bearing | 32 SB Gasket |
| 3 Hexagon socket head cap screw | 13 Double ext. RV worm | 23 Worm wheel | 33 Circlip for shaft |
| 4 Hexagon nuts | 14 Parallel key | 24 O-ring | 34 Output flange |
| 5 Hexagon bolt | 15 Bearing | 25 Bearing support cover | 35 Hexagon socket head cap screw |
| 6 Gear unit cover | 16 Gasket | 26 Hexagon socket head cap screw | 36 Torque arm |
| 7 O-ring | 17 Circlip for hole | 27 Oli seal | 37 Hexagon socket head cap screw |
| 8 Spacer shim | 18 Cap | 28 single output shaft | 38 Protection cap |
| 9 Bearing | 19 Oli seal | 29 Double output shaft | 39 Hexagon socket head cap screw |
| 10 PAM worm | 20 Casing | 30 Parallel key | |