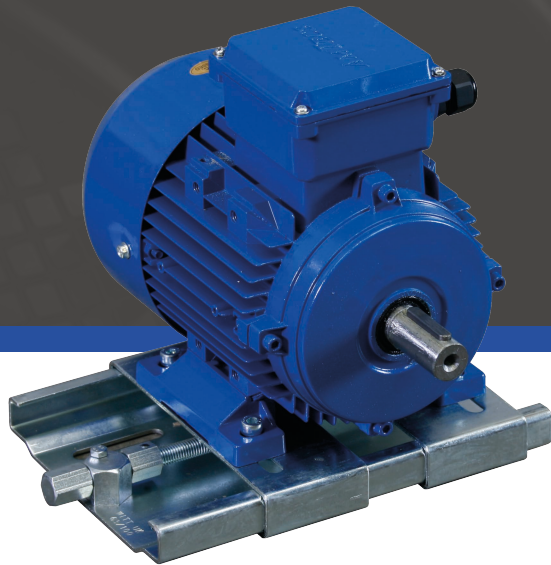


Motor Slide Bases



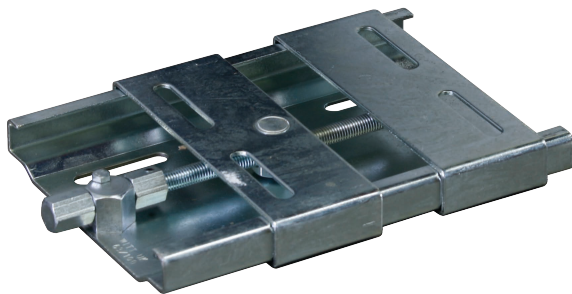
Motor Slide Bases offered from the Amtecs product range have been extended for use with motors up to frame size 280 (90 kw).

For optimum choice to both designer and user we offer the standard twin-plate slide base type (SB) for motor frames 63 to 132.

Where excessive drive torque's are required we offer the slightly more robust Mono Plate Base (SPB) in a range to suit frames 90 to 280.

Both ranges are specifically designed for extreme drive loads and all sizes are manufactured without welding in heavy gauge pre slotted galvanised steel thus offering through design maximum resistance to corrosion.

For offshore and special process applications all bases can be supplied to special order coated or manufactured in Stainless Steel.



What are slide bases used for?

Motor Slide Bases are used on fans, conveyors and any other processes that involve belt tightening. Due to varying temperatures and belt strength, the tightness of the belt must be adjusted to keep machinery running at its maximum efficiency. Even the most experienced engineers can take up to an hour adjusting motor slide rails. The "Quick-Fit" and "Mono-Plate" range supplied by Amtecs means that belts can be easily adjusted in a matter of minutes, irrespective of engineering experience.



To suit motors
upto frame size
132



Designed
for extreme
drive loads



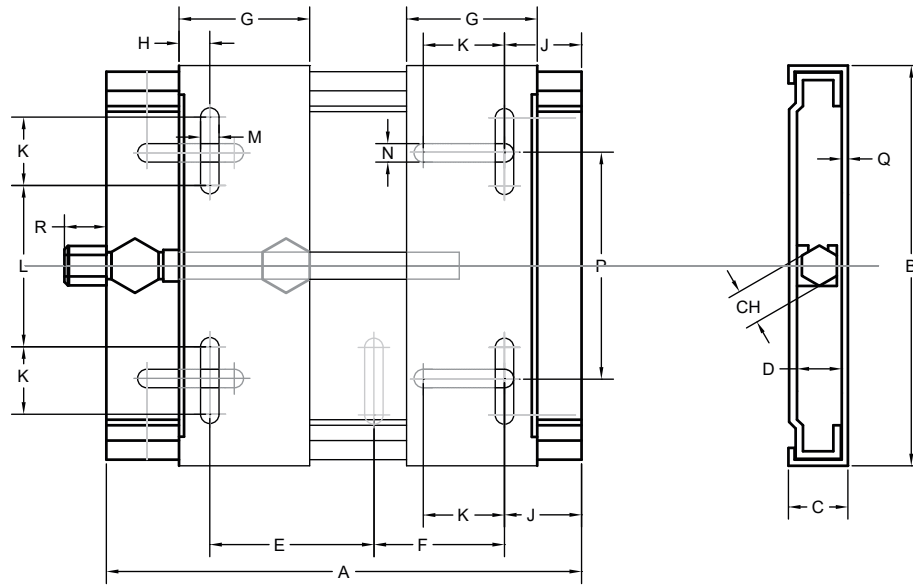
Supplied
Zinc coated



Adjust belts
in a matter
of minutes



Manufactured
without welding



Type	Motor Frame Size	A	B	C	D	E	F	G	H	J	K	L	M	N	O	P	Q	R	R	Weight (KG)
SB 63/80	63-80	210	195	33	27	100	70	70	20	25	50	43	10.5	10.5	19	98	3	30	30	2.3
SB 63/100	63-100	270	195	33	27	100	130	70	20	25	50	43	10.5	10.5	19	98	3	30	30	2.7
SB 90/112	90-112	307	213	33	27	100	165	70	20	29	50	62	10.5	10.5	19	108	3	30	30	3.5
SB 90/132	90-132	430	290	40	32	140	240	95	27	29	62.5	90	13	13	22	165	4	30	30	7.4
SB 90/132-2	90-132	430	290	40	32	140	150	95	27	29	62.5	90	13	13	22	165	4	30	30	6.3

Type	Adjustments	63	71	80	90S	90L	100	112	132S	132M	Additional adjustments with slots
SB 63/80	E	100	112	125							F+50
	F	70	58	45							
SB 63/100	E	100	112	125	140	140	160				
	F	130	118	105	90	90	70				
SB 90/112	E				140	140	160	190			
	F				127	127	107	77			
SB 90/132	E				140	140	160	190	216		
	F				240	240	107	190	164	216	
SB 90/132-2	E				140	140	160	190	216	164	F+62.5
	F				240	240	220	190	164	164	

We make all efforts to better our products. Versions, technical data and figures could be changed therefore. They are not binding before written confirmation.